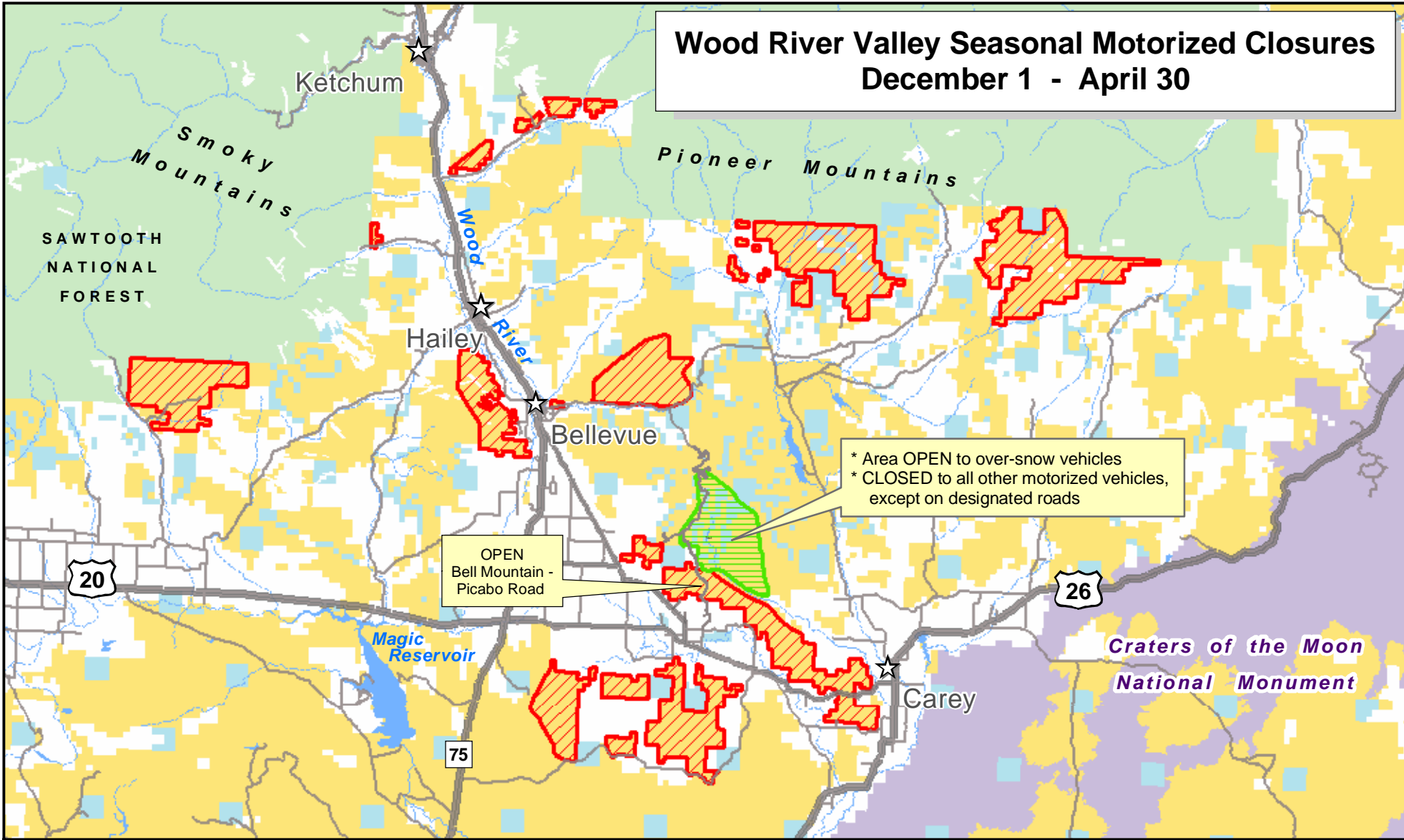


# Wood River Valley Seasonal Motorized Closures December 1 - April 30



\* Area OPEN to over-snow vehicles  
\* CLOSED to all other motorized vehicles, except on designated roads

OPEN  
Bell Mountain -  
Picabo Road



DRAFT MAP: No warranty is made by the Bureau of Land Management for the use of this data for purposes not intended by BLM. No warranty is made for the accuracy or completeness of this data. This data is not intended for legal or navigational use. The base map includes 1990's road & ownership data. The seasonal closure area was on-screen digitized. This map was printed by the Idaho Falls Field Office, Upper Snake River District.

	Private
	Bureau of Land Management
	US Forest Service
	National Park Service
	State of Idaho
	Water

<b>Legend</b>
<b>Closed to Motorized Vehicles Use Only Designated Roads</b>
<b>Closed to Motorized Vehicles Use Only Designated Roads Open to Over-Snow Vehicles</b>
<b>Cities</b>

