

**START**  
**WINNIPEG, MB**  
 RED RIVER CO-OP SPEEDWAY

ST. PAUL WINTER CARNIVAL UNION CARBIDE SNOWMOBILE RACE UNION CARBIDE  
**START INTERNATIONAL 500**  
 WINNIPEG-ST. PAUL  
CO-SPONSORED BY ST. PAUL WINTER CARNIVAL IN COLLABORATION WITH SIBIRITE CONVENTION & VISITORS BUREAU





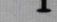
**DAY 1:** Winnipeg, MB to Thief River Falls, MN  
 Approx 190 miles

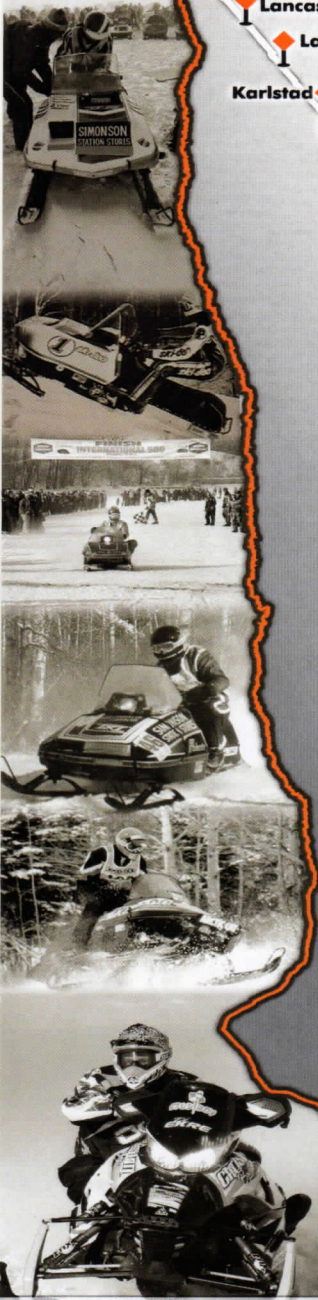
**DAY 2:** Thief River Falls to Bemidji, MN  
 Approx 125 miles

**DAY 3:** Bemidji to Alexandria, MN  
 Approx 180 miles

**DAY 4:** Alexandria to finish in Willmar, MN  
 Approx 125 miles

**FINISH**  
**WILLMAR, MN**  
 ROBBINS ISLAND

-  Ditches
-  Trail/Woods
-  Rivers/Lakes
-  Fuel Stop
-  Town



**FEBRUARY 10-13, 2016**

THIEF RIVER FALLS • WARROAD • RED LAKE  
 **SEVENCLANS**  
 CASINOS

**USX C**  
 United States X-Country Snowmobile Racing

**woody's**

**SEVEN CLANS USXC I-500 ❄️ WINNIPEG TO WILLMAR**